



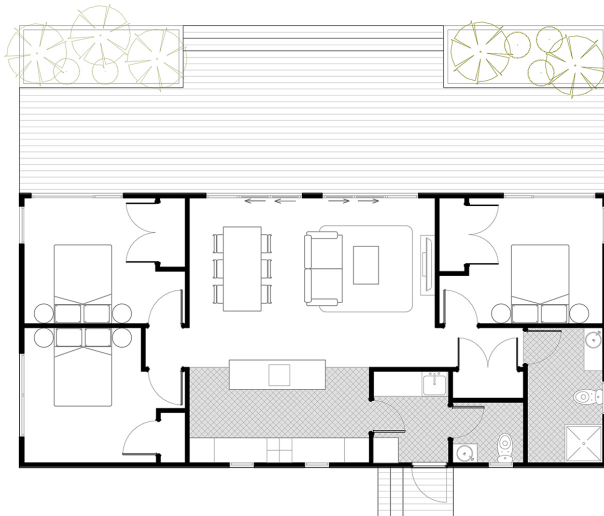
Slimline

 **91.8 sqm**

 **3 Bedrooms**

 **1 Bathroom**

Open Plan Living & Dining allowing room for both the Lounge furniture and seating area. Separate Toilet off the laundry and Great Size Bedrooms.



Area: 91.8 sqm



Kitchen

Open plan kitchen gives plenty of useable surface area.



Modern Appliances

Our homes come complete with Induction hob, oven, range hood & dishwasher.



Bathroom convenience

The modern and spacious bathroom design ables owners to enjoy both the main bathroom and en suite (if any).



Storage Options

Great storage areas as well as option to add more.



Heat Pump

Heat Pumps are included in all of our homes.



Deck Area

Our homes are designed to allow great decking/outdoor areas - Decking not included - to be arranged onsite by client



Washing Facility/Utility

Laundry areas are included in all out homes and include a laundry tub.

**Includes transport, insurances, consents & standard piling (subject to site inspection, zoning & ground conditions)
Standard construction includes linear weatherboard & Colorcote roof. Full insulation & thermally broken joinery with solux E glass . All packages come complete with stainless steel under bench oven, electric hob, canopy range hood, dishwasher, fixed floor coverings with painted interior & exterior wall finish. Standard specifications can be viewed at Presidential Homes Show Home/Factory.*