



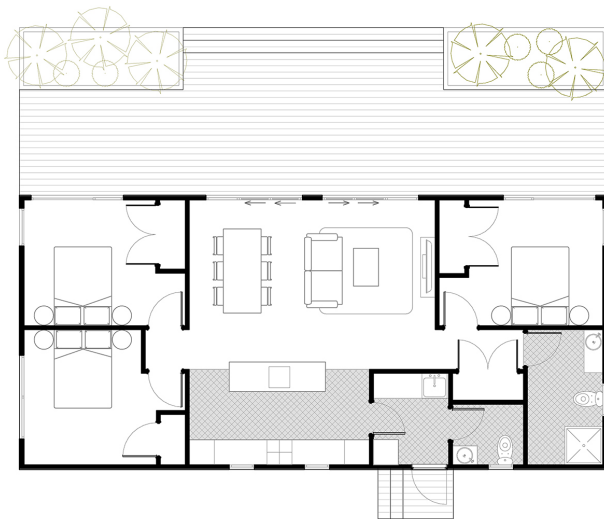
## Slimline

 **91.8 sqm**

 **3 Bedrooms**

 **1 Bathroom**

Open Plan Living & Dining allowing room for both the Lounge furniture and seating area. Separate Toilet off the laundry and Great Size Bedrooms.



Area: 91.8 sqm



### Deck Area

Our homes are designed to allow great decking/outdoor areas - Decking not included - to be arranged onsite by client



### Washing Facility/Utility

Laundry areas are included in all out homes and include a laundry tub.



### Kitchen

Open plan kitchen gives plenty of useable surface area.



### Modern Appliances

Our homes come complete with Induction hob, oven, range hood, waste disposal unit & dishwasher.



### Bathroom convenience

The modern and spacious bathroom design ables owners to enjoy both the main bathroom and en suite (if any).



### Storage Options

Great storage areas as well as option to add more.



### Heat Pump

Heat Pumps can be arranged/included as an upgrade.

*\* Includes transport, insurances, consents & standard piling (subject to site inspection & zoning)*

*Standard construction includes linear weatherboard & Colorsteel roof. Full insulation & double glazing. All packages come complete with stainless steel under bench oven, electric hob, canopy range hood, dishwasher, fixed floor coverings with painted interior & exterior wall finish. Standard specifications can be viewed at Presidential Homes Show Home/Factory.*