



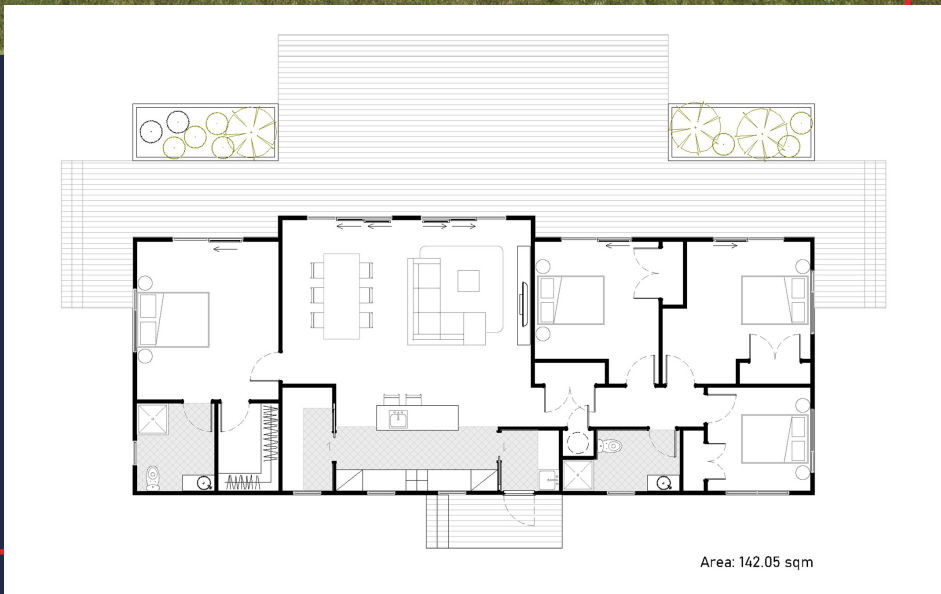
4 Bedroom Facelift

 142.05 sqm

 4 Bedrooms

 2 Bathrooms

A Large Home with Large Master and ample size bedrooms. This Home is a Larger Variation of the lux plan for those that require that bit of extra space. Open Plan Living & Dining with sliders across the entire front for a great outdoor decking area. Separate Master on one end of the house and 3 bedrooms on the other.



Kitchen

Open plan kitchen gives plenty of useable surface area.

Modern Appliances

Our homes come complete with Induction hob, oven, range hood & dishwasher.


Bathroom convenience

The modern and spacious bathroom design ables owners to enjoy both the main bathroom and en suite (if any).

Storage Options

Great storage areas as well as option to add more.

Heat Pump

 Heat Pumps are included in all of our homes.



Deck Area

Our homes are designed to allow great decking/outdoor areas - Decking not included - to be arranged onsite by client

**Includes transport, insurances, consents & standard piling (subject to site inspection, zoning & ground conditions)*

Standard construction includes linear weatherboard & Colorcote roof. Full insulation & thermally broken joinery with solux E glass . All packages come complete with stainless steel under bench oven, electric hob, canopy range hood, dishwasher, fixed floor coverings with painted interior & exterior wall finish. Standard specifications can be viewed at Presidential Homes Show Home/Factory.