



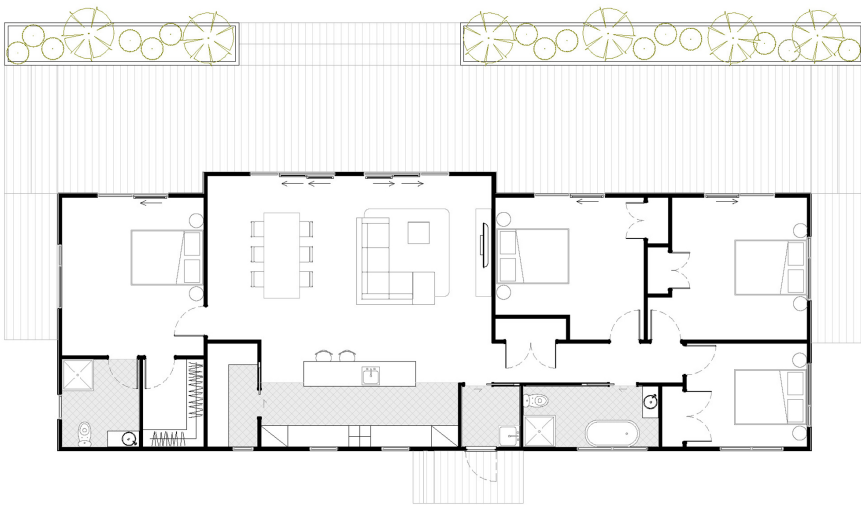
4 Bedroom Facelift Plus

 157.05 sqm

 4 Bedrooms

 2 Bathrooms

This home is a larger variation of the Facelift plan. Open plan living and dining with sliders across the entire front for a great outdoor decking area. A separate master on one end of the house with walk in wardrobe and ensuite on one end of the house and 3 bedrooms and bathroom on the other.



Area: 157.05 sqm



Kitchen

Open plan kitchen gives plenty of useable surface area.



Modern Appliances

Our homes come complete with Induction hob, oven, range hood & dishwasher.



Bathroom convenience

The modern and spacious bathroom design ables owners to enjoy both the main bathroom and en suite (if any).



Storage Options

Great storage areas as well as option to add more.



Heat Pump

Heat Pumps are included in all of our homes.



Deck Area

Our homes are designed to allow great decking/outdoor areas - Decking not included - to be arranged onsite by client

**Includes transport, insurances, consents & standard piling (subject to site inspection, zoning & ground conditions)*

Standard construction includes linear weatherboard & Colorcote roof. Full insulation & thermally broken joinery with solux E glass . All packages come complete with stainless steel under bench oven, electric hob, canopy range hood, dishwasher, fixed floor coverings with painted interior & exterior wall finish. Standard specifications can be viewed at Presidential Homes Show Home/Factory.